

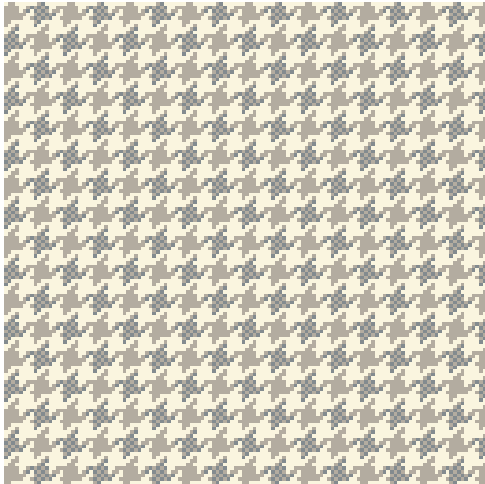
8005
60/80/90/95

balta
carpets

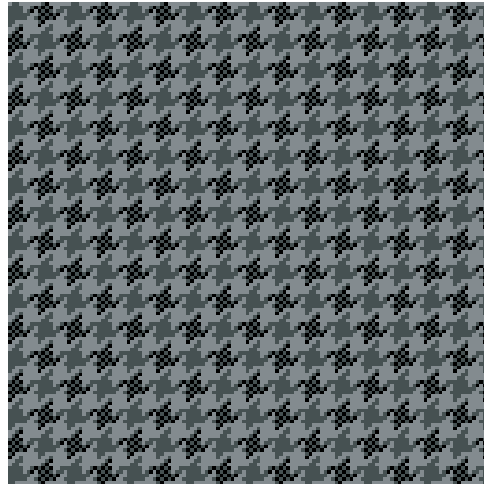
60	80	95
95	90	

Chelsea Wiltax

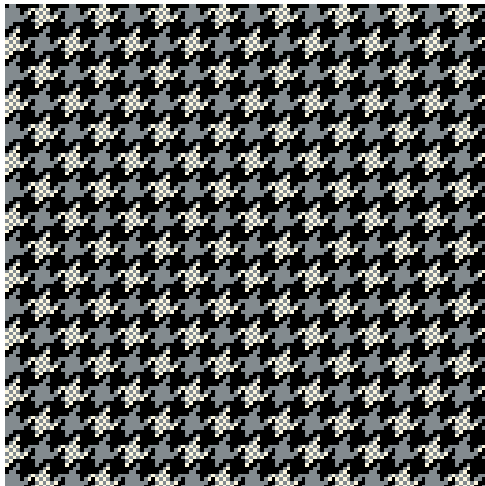




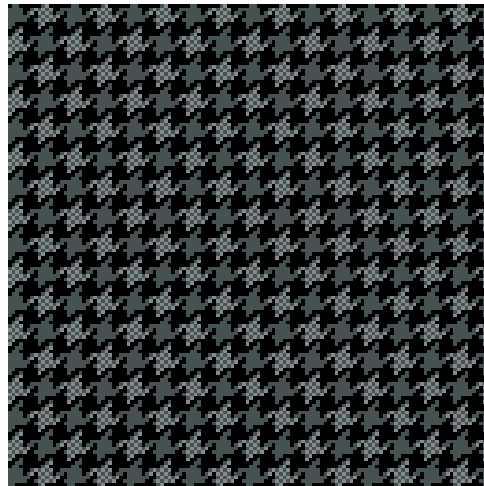
▲ 65



▲ 90



▲ 80



▲ 80

Manufacturing process	Woven face-to-face Wilton	Number of points	ca. 482.800m²
Pile content	100% PP StainSafe®	Width	400 cm
Pile weight	ca. 2.100 gr/m²	Design Repeat	4,7 (W) x 4,5 (H) cm
X 4,5	ca. 2.576 gr/m²	Light Fastness	5-6
Pile height	ca. 10 mm	Water resistance	4-5
Total height	ca. 13 mm	Characteristics	Heavy Domestic / Medium contract use
Shot density	71/10 cm	Thermal resistance	0,15 m² K/W (Tog 1,5)
Warp rate	34/10 cm	Installation	Underlay and gripper rods BS5325

EN14041

CE

18

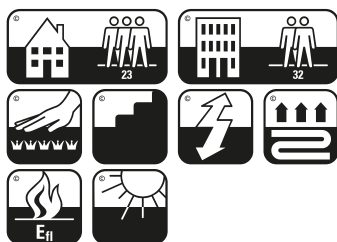
Balta Industries - Wakkensteenweg 2
BE - 8710 Sint-Baafs-Vijve

DOP: 1010#BC0AEL

Textile Floor Covering EN1307

DL NA HCHO DS

www.baltamediabank.com



EAC



Onder voorbehoud van de wijzigingen van de technische specificaties - Kijk voor de uitgebreide garantievoorwaarden op www.stain-safe.com
Sous réserve de modifications techniques - Pour le détail des conditions de garantie, rendez-vous sur www.stain-safe.com
Unter Vorbehalt von Änderungen der technischen Daten - Detaillierte Garantiebedingungen finden Sie auf www.stain-safe.com
All rights reserved to alter technical specifications - For detailed warranty conditions, see www.stain-safe.com

Wakkensteenweg 2, 8710 Sint-Baafs-Vijve, Belgium
T +32 (0)56 62 22 11, info@baltagroup.com, www.baltagroup.com

