

Primrose

1/10" uni saxony

**100% solution dyed
PA IMPREL® FINESSE**

RUG
Twinback

POOLHOOGTE
± 8,5 mm

TOTALE HOOGTE
± 11,5 mm

POOLGEWICHT
± 1.430 g/m²

TOTAAL GEWICHT
± 2.250 g/m²

AANTAL NOPPEN/M²
± 232 000

LICHTECHTHEID
≥ 7

WATERECHTHEID
≥ 4-5

WARMTEDOORLAATWEERST.
± 0,189 m² K/W

BRANDKLASSE
Cfl-s1 (EN 13501-1)

1/10" saxony uni

**100% solution dyed
PA IMPREL® FINESSE**

DOSSIER
Twinback

HAUTEUR DU VELOURS
± 8,5 mm

HAUTEUR TOTALE
± 11,5 mm

POIDS DU VELOURS
± 1.430 g/m²

POIDS TOTAL
± 2.250 g/m²

NOMBRE DE POINTS/M²
± 232 000

RÉSISTANCE À LA LUMIÈRE
≥ 7

RÉSISTANCE À L'EAU
≥ 4-5

RÉSISTANCE THERMIQUE
± 0,189 m² K/W

CLASSEMENT FEU
Cfl-s1 (EN 13501-1)

1/10" Uni-Saxony

**100% solution dyed
PA IMPREL® FINESSE**

RÜCKEN
Twinback

POLHÖHE
± 8,5 mm

GESAMTHÖHE
± 11,5 mm

POLGEWICHT
± 1.430 g/m²

GESAMTGEWICHT
± 2.250 g/m²

NOPPEN/M²
± 232 000

LICHTECHTHEIT
≥ 7

WASSERECHTHEIT
≥ 4-5

WÄRMEDURCHLASSWIDERST.
± 0,189 m² K/W

BRANDKLASSE
Cfl-s1 (EN 13501-1)

1/10" plain saxony

**100% solution dyed
PA IMPREL® FINESSE**

BACKING
Twinback

PILE HEIGHT
± 8,5 mm

TOTAL HEIGHT
± 11,5 mm

PILE WEIGHT
± 1.430 g/m²

TOTAL WEIGHT
± 2.250 g/m²

TUFT DENSITY/M²
± 232 000

LIGHT FASTNESS
≥ 7

WATER RESISTANCE
≥ 4-5

THERMAL RESISTANCE
± 0,189 m² K/W

FIRE CLASS
Cfl-s1 (EN 13501-1)

EN14041
CE
19
Balta Industries - Kanegem-
straat 15 - BE 8700 Tielt
DOP: 1011#IE00CV
Textile Floor Covering EN 1307
Notified body 2401
www.baltamediaibank.com

REG. NR
28E5EB4E
www.pro-dis.info

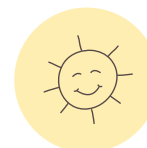
EMISSIONS DANS L'AIR INTÉRIEUR
A+



10 YEARS
STAIN-FREE



20 YEARS
WEAR WARRANTY



INFINITE
LIGHT FASTNESS



EVERLASTING
SOFTNESS



ETERNAL BLEACH
CLEANABILITY



Onder voorbehoud van wijzingen van de technische specificaties - Sous réserve de modifications techniques - Unter Vorbehalt von technischen Änderungen- All rights reserved to alter technical specification

	27	30	33	35	37	43	47	63	74	77	86	90	93	95	96	97	98
ca 4m
ca 5m

ETERNITY
SOFTNESS TO LAST

Primrose



63



47



43



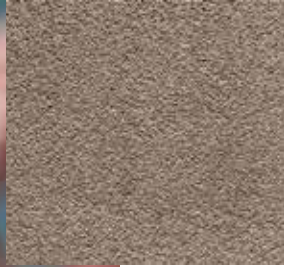
35



90



37



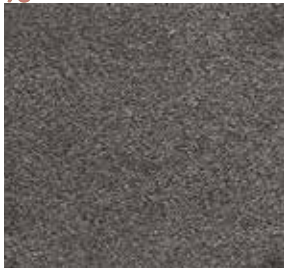
33



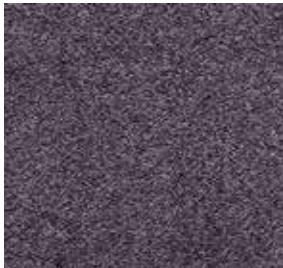
30



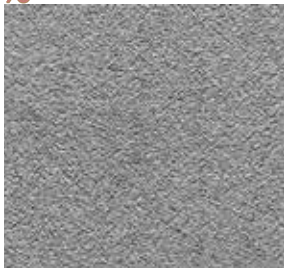
93



96



86



95



97



98



77



74



27