

CONSTRUCTION Tufting 1/10" loop pile
STRUCTURE Tufté 1/10" bouclé
STRUKTUR Getuftet 1/10" Schlinge
STRUCTUUR Getuft 1/10" lussenpool

PILE MATERIAL 100% PA 6 IMPREL®
COMPOSITION DU VELOURS
POLMATERIAL
POOLMATERIAAL

PRIMARY BACKING Non woven PES
SUPPORT Non tissé PES
TRÄGERMATERIAL Vlies, PES
TUFTDOEK Vilt, PES

SECONDARY BACKING Action Back
DOSSIER
RÜCKEN
TAPIJTRUG

PILE WEIGHT Ca. 640 gr/m²
POIDS DU VELOURS
POLEINSATZGEWICHT
POOLGEWICHT

TOTAL WEIGHT Ca. 1.711 gr/m²
POIDS TOTAL
GESAMTGEWICHT
TOTAAL GEWICHT

PILE HEIGHT Ca. 3,1 mm
EPAISSEUR DU VELOURS
POLHÖHE
POOLHOOGTE

TOTAL HEIGHT Ca. 5,8 mm
EPAISSEUR TOTALE
GESAMTHÖHE
TOTALE DIKTE

TUFT DENSITY Ca. 218 400/m²
NOMBRES DE POINTS
NOPPENZAHL
AANTAL PUNTEN

PILE DENSITY Ca. 0.118 g/cm³
DENSITÉ DU VELOURS
POLROHDICHTÉ
POOLDICHTHEID

CLASSIFICATION EN 1307
CLASSEMENT 33 - LC1
KLASSIFIKATION
CLASSIFICATIE

CASTOR CHAIR SUITABILITY EN 985
CHAISE À ROULETTES A: intensive use
STUHLROLLENEIGNUNG
ROLSTOELGESCHIKTHEID

STAIR SUITABILITY EN 1963
ESCALIERS A: intensive use
TREPPENEIGNUNG
TRAPPENGESCHIKTHEID

PERMANENTLY ANTISTATIC ISO 6356
ANTISTATIQUE PERMANENT < 2 kV
PERMANENT ANTISTATISCH
PERMANENT ANTISTATISCH

IMPACT NOISE RATING ISO 140-8
ISOLATION PHONIQUE 25 dB ΔLw
TRITTSCHALLVERBESSERUNG
GELUIDSISOLATIE

SOUND ABSORPTION ISO 354
ABSORPTION PHONIQUE 0.15 αw
SCHALLABSORPTIONSGRAD
GELUIDSABSORPTIE

THERMAL RESISTANCE ISO 8302
RÉSISTANCE THERMIQUE 0.07 m² K/W
WÄRMEDURCHLASSWIDERSTAND
WARMTEDOORLAATWEERSTAND

FASTNESS TO LIGHT ISO 105-B02
SOLIDITÉ A LA LUMIÈRE ≥ 5-6
LICHTECHTHEIT
LICHTECHTHEID

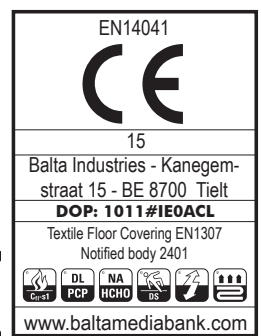
COLOUR FASTNESS TO WATER EN ISO 105-E01
SOLIDITÉ À L'EAU ≥ 4-5
WASSERECHEITHEIT
WATERECHTHEID

RUBBING FASTNESS EN ISO 105-X12
SOLIDITÉ AU FROTTEMENT ≥ 4
REIBECHTHEIT
WRIJFECHTHEID

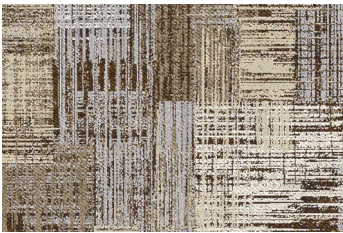
FIRE RESISTANCE EN 13501-1
COMPORTEMENT AU FEU Cfl-s1
BRENNVERHALTEN
BRANDGEDRAG

WIDTH EN ISO 3018
LARGEUR ca. 400 cm
BREITE
BREEDTE

RV Alethea on stock
 RV Celestia on stock
 RV Coralia special production
 RV Louviana special production
 RV Ludmilla special production
 RV Seraphina special production



Grace The Vintage Collection



▲ RV Seraphina 43



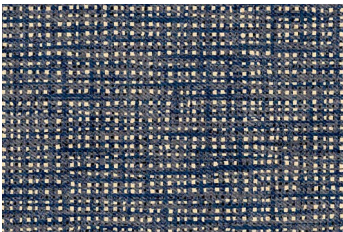
▲ RV Alethea 43



▲ RV Louvinia 34



▲ RV Celestia 43



▲ RV Coralia 73



▲ RV Louvinia 73



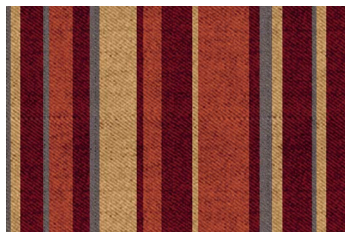
▲ RV Alethea 79



▲ RV Ludmilla 73



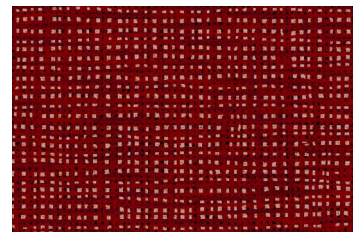
▲ RV Alethea 14



▲ RV Ludmilla 15



▲ RV Celestia 15



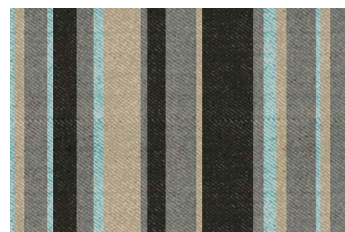
▲ RV Coralia 15



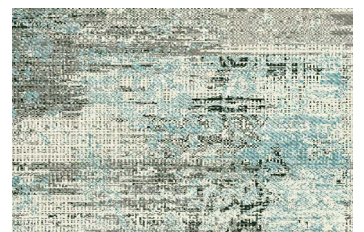
▲ RV Celestia 32



▲ RV Seraphina 92



▲ RV Ludmilla 92



▲ RV Alethea 32

RV Alethea ⇄ ca. 196 x ⇄ ca. 295 cm
 RV Celestia ⇄ ca. 196 x ⇄ ca. 190 cm
 RV Coralia ⇄ ca. 98 x ⇄ ca. 95 cm

RV Louviana ⇄ ca. 98 x ⇄ ca. 95 cm
 RV Ludmilla ⇄ ca. 50
 RV Seraphina ⇄ ca. 196 x ⇄ ca. 190 cm



arc edition
 performance flooring